

Figure 1: Decision tree –
Clinical Trial Definition

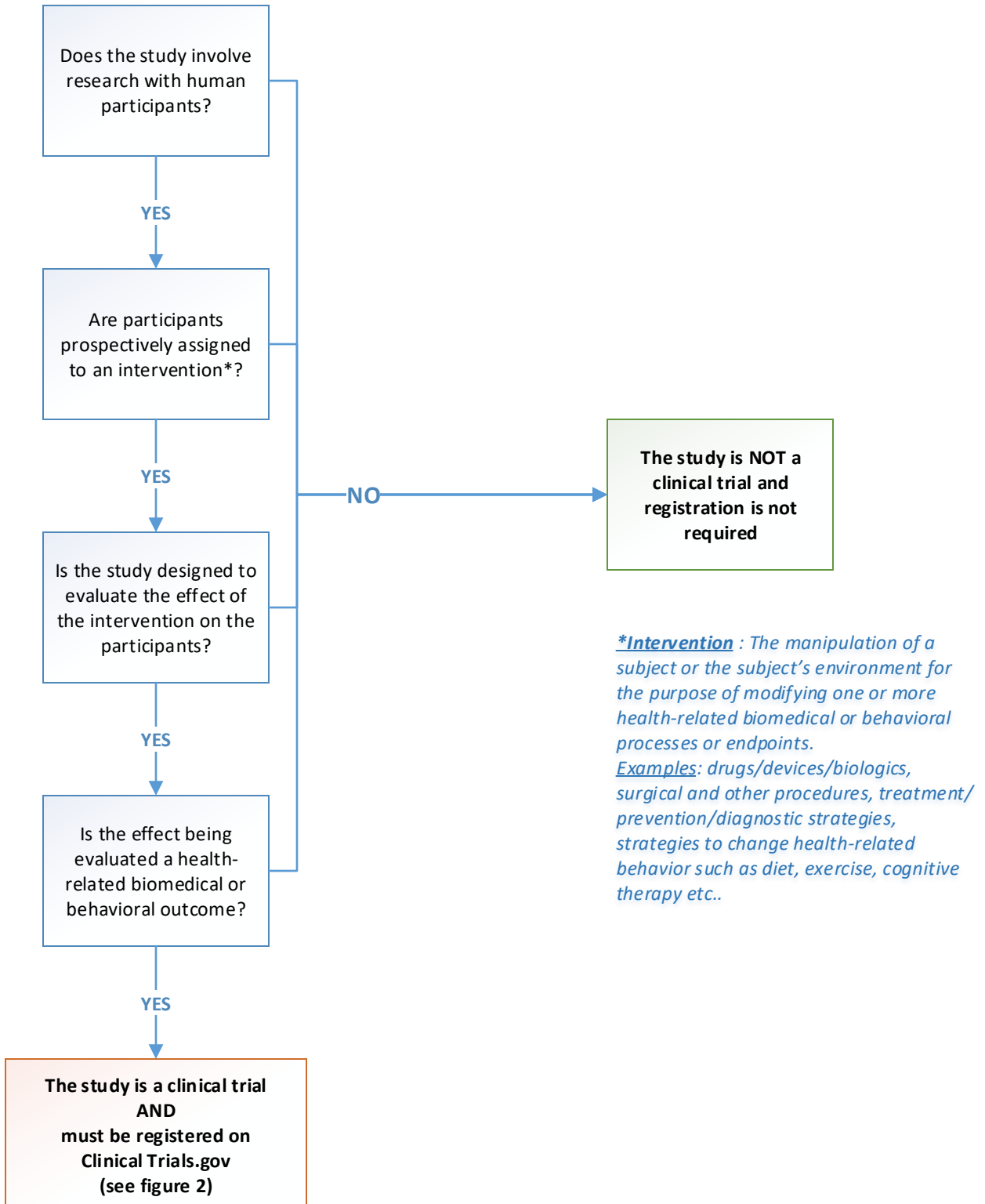
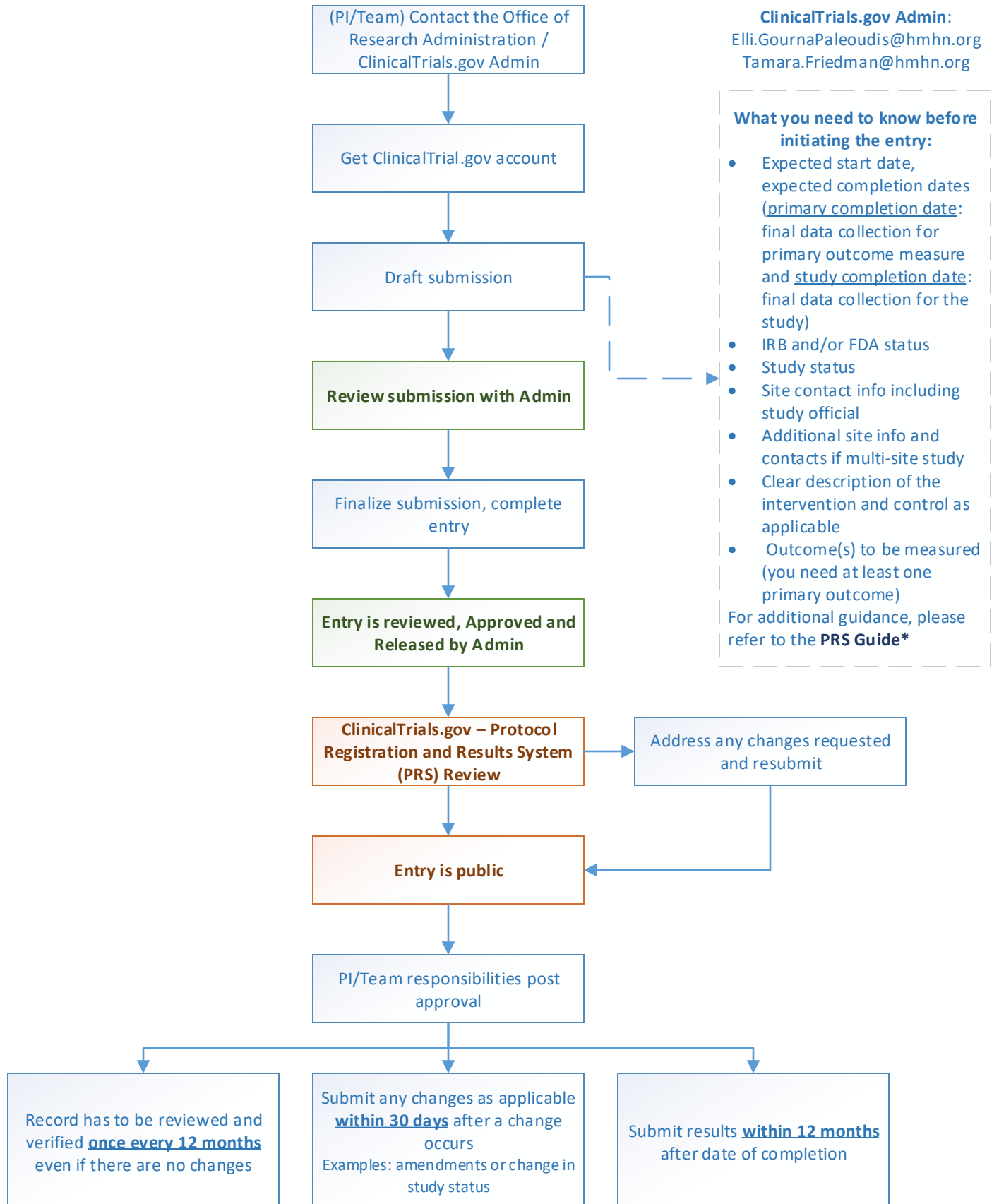


Figure 2: Registration Process

REGISTRATION MUST BE COMPLETED AT OR BEFORE FIRST PARTICIPANT IS ENROLLED



*https://prsinfo.clinicaltrials.gov/tutorial/content4/index.html#/lessons/g6YNwAz3eVSwAu6b_OcNDRxWXxcvz3YY